

# Pequeña Serenata Nocturna

## (1<sup>er</sup> movimiento)



Mozart

allegro  $\text{♩} = 120$

Soprano Glockenspiel *f*

Alto Glockenspiel *f*

Soprano Metallophone *f*

Alto Metallophone *f*

Alto Xylophone *f*

Soprano Xylophone *f*

Bass Metallophone *f*

6

SG

AG

SM

AM

AX

SX

BM

10

SG  
AG  
SM  
AM  
AX  
SX  
BM

This musical system contains measures 10 through 13. It features seven staves labeled SG, AG, SM, AM, AX, SX, and BM. Measures 10 and 11 show active melodic lines in SG and AG, while SM and AM have rests. Measures 12 and 13 show a more active bass line in BM, with SM and AM also having rests. The AX and SX staves remain empty throughout.

14

SG  
AG  
SM  
AM  
AX  
SX  
BM

This musical system contains measures 14 through 17. Measures 14 and 15 show active melodic lines in SG and AG, with SM and AM also having rests. Measures 16 and 17 show a more active bass line in BM, with SM and AM also having rests. The AX and SX staves remain empty throughout.

Soprano Glockenspiel  
**Pequeña Serenata Nocturna**  
(1<sup>er</sup> movimiento)



Mozart

allegro ♩ = 120



Alto Glockenspiel

# Pequeña Serenata Nocturna

(1<sup>er</sup> movimiento)



allegro ♩ = 120

*f*

The first staff of music is in treble clef with a 4/4 time signature. It begins with a forte dynamic marking 'f'. The melody consists of eighth and quarter notes, with some rests. The word 'Mozart' is written in a stylized font at the end of the staff.

7

The second staff of music continues the melody from the first staff, starting at measure 7. It features a series of eighth notes and quarter notes, ending with a quarter rest.

13

The third staff of music continues the melody from the second staff, starting at measure 13. It features a series of eighth notes and quarter notes, ending with a quarter rest and a double bar line.

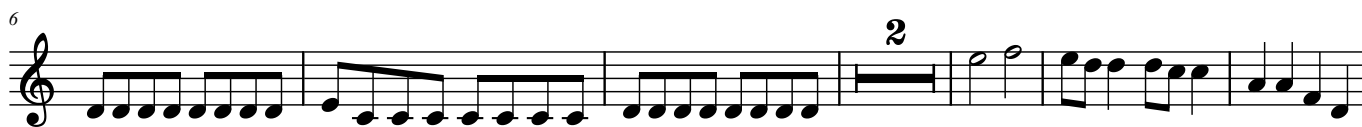
Soprano Metallophone

# Pequeña Serenata Nocturna (1<sup>er</sup> movimiento)



Mozart

allegro ♩ = 120





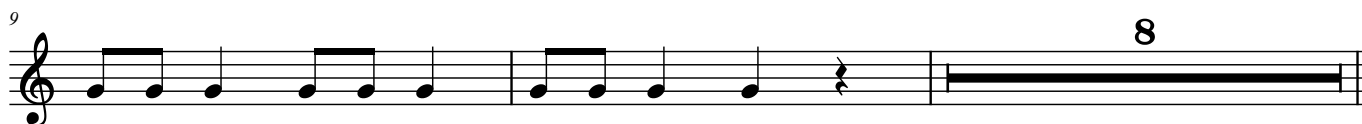
Alto Xylophone

# Pequeña Serenata Nocturna (1<sup>er</sup> movimiento)



Mozart

allegro ♩ = 120

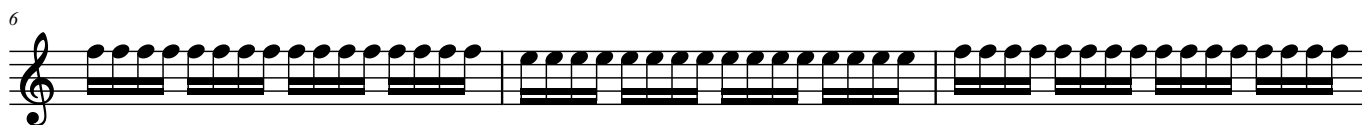


Soprano Xylophone  
**Pequeña Serenata Nocturna**  
(1<sup>er</sup> movimiento)



**Mozart**

allegro ♩ = 120





Bass Metallophone

# Pequeña Serenata Nocturna (1<sup>er</sup> movimiento)



Mozart

allegro ♩ = 120

